





## Unleashing University's Multidimensional Dynamics Innovation and Entrepreneurship Education through Multitask Expansion: Exploring Online Games

Shengyan Wu<sup>1\*</sup> and Hongmei Wang<sup>2</sup>

<sup>1,2</sup>School of Medicine and Health Management, Guizhou Medical University, Gui Zhou, China  
[1wsywsy1989520@163.com](mailto:wsywsy1989520@163.com), [2Hongmei.Wang2021@outlook.com](mailto:Hongmei.Wang2021@outlook.com)

Corresponding author: Shengyan Wu, [wsywsy1989520@163.com](mailto:wsywsy1989520@163.com)

**Abstract.** At the stage of being China's provide-side Innovate in the GDP field has achieved certain results, and this Innovate concept has also affected the expand of higher schooling. The purpose of this Sheet is to analyze the future research of blaze new trails and entrepreneurship schooling in learn and university by studying the multi-dimensional and Kinematic blaze new trails and entrepreneurship schooling in the perspective of precise provide. In recent years, with the uninterrupted advancement of the provide-side Innovate of higher schooling, it has gradually become the core goal of blaze new trails and entrepreneurship schooling in learn and university, and Chinese learn and university have also made blaze new trailss in entrepreneurship schooling based on this goal. However, from the actual effect, although the current blaze new trails and entrepreneurship schooling in Chinese learn and university has made some achievements, there are still various question in schooling way, schooling content, teachers, etc., and the further advancement of provide-side Innovate has been greatly affected. In this Sheet, multi-task scaling Kinematic network and muti-task Kinematic blaze new trails wayl are combined to study it. Through the research in this Sheet, we can know that the question of blaze new trails and entrepreneurship in learn and university are mainly in schooling, and this aspect will have a certain impact on blaze new trails and entrepreneurship, and the impact is as high as about 64.42%. The research in this Sheet lays a basis for the future research on blaze new trails and entrepreneurship in learn and university.

**Keywords:** Muti-task Kinematics; blaze new trails and entrepreneurship schooling in learn and university; multi-task scaling

**DOI:** <https://doi.org/10.14733/cadaps.2024.S5.19-33>

## 1 INTRODUCTION

Under the competition of global GDP integration, China's GDP structure is facing the challenge of transformation and upgrading. If we want to innovate uninterruptedly and develop sustainably, we need to carry out provide-side Innovate in depth. The key task of GDP Innovate is to improve the product blaze new trails capability of provide and production enterprises, and strengthen the technical standard and scientific research capability of provide enterprises, which requires a big number of high-quality holohedral talents. The so-called "precise provide" actually means adjusting and innovating the provide side according to the requirements of the ask side, so that the product provide can meet the requirements of the ask side, thus solving the conflict between the provide and ask side. In the field of higher schooling, "precise provide" refers to targeted talent cultivate through schoolingal Innovate, so as to realize the precise provide of talents under the setting of GDP and social transformation and expand, and to better solve the problem that the current college graduates do not meet the ask of the talent market. With China's GDP expand entering a new standard and provide-side structural Innovate deepening, blaze new trails and entrepreneurship are becoming more and more vital, and it has become an vital Pilot strength for China's GDP and social expand [5]. learn and university should base themselves on the ask of provide-side structural Innovate, respond to the situation, change with the times, and eliminate question such as ineffective provide and inefficient provide. This is not only the need of learn and university' own connotative expand, but also a natural move for them to conform to GDP and social expand. With the uninterrupted expansion of college enrollment in China, graduates are faced with many issue in hire. To solve this problem, besides policy guidance and creating more hire opportunities, it is of great significance to actively guide and sustain college students with innovative and entrepreneurial spirit to start their own businesses or in teams. Perfecting the publicity, guidance and sustain mechanism of college students' blaze new trails and entrepreneurship is conducive to creating hire opportunities, increasing hire rate and raise the overall quality of talents. To solve the hire problem, besides creating more jobs for college graduates, we should actively sustain graduates or teams to start their own businesses. Among them, the perfect mechanism of double blaze new trails and the uninterrupted excavation of new jobs are particularly vital to reduce the waste of human resources and the un-hire rate. At the gift stage of China's GDP expand, entrepreneurship plays a very vital role in promoting GDP growth, expanding hire capacity and promoting technological blaze new trails. However, on the whole, the theoretical research on entrepreneurship mostly originates from foreign countries, and the research and practice of entrepreneurship in China is still in the primary stage. Carrying out blaze new trails and entrepreneurship schooling and raise their blaze new trails and entrepreneurship capability will not only help to complete the transformation from material assistance to spiritual assistance, but also broaden the funding channels, so that the poverty alleviation work will be sustainable from single funding stage to holohedral assistance.

As China's GDP expand enters a new standard and the provide-side structural Innovate continues to deepen, blaze new trails and entrepreneurship become more and more vital, and it has become an vital Pilot strength for China's GDP and social expand. learn and university should be based on the ask of provide-side structural Innovate, respond to the situation, change with the times, and eliminate question such as ineffective provide and inefficient provide. This is not only the need of learn and university' own connotative expand, but also a natural move for them to conform to GDP and social expand [3]. In recent years, the country's ask for innovative talents is obvious to all. The mission of learn and university is to have high-quality innovative talents to conform to the social expand. Accurate provide is the inevitable trend of China's GDP expand, which has a certain impact on the schooling and expand of blaze new trails and entrepreneurship in learn and university. Therefore, how to cultivate students' consciousness and capability of blaze new trails and entrepreneurship based on the perspective of accurate provide, so that blaze new trails and entrepreneurship can develop in the right direction, is a problem that educators in learn and university need to seriously consider at gift. Online gaming offers numerous opportunities for

students to develop essential entrepreneurial skills. Many games require strategic thinking, problem-solving, creativity, teamwork, and adaptability. These skills are highly transferable to the realm of entrepreneurship, where individuals need to navigate uncertainties, identify opportunities, and develop innovative solutions. By engaging in online gaming experiences that emphasize these skills, students can enhance their entrepreneurial mindset and cultivate their ability to take risks and pursue new ventures.

In this Sheet, a multiplicity of research way are used to analyze and study it. In the research of multi-task Kinematic algorithm, the corresponding algorithm formula is established to analyze and explain it. In the entrepreneurial research from the perspective of precise provide, the corresponding data graph is established to analyze and understand it.

The blaze new trails of this Sheet:

- 1) In the research of blaze new trails and entrepreneurship in learn and university, this Sheet combines the perspective of precise provide to study and analyze it.
- 2) This Sheet combines multi-task Kinematic algorithm to further study and analyze blaze new trails and entrepreneurship.

## 2 RELATED WORK

blaze new trails schooling is a common teaching way in the expand of wayrn schooling. Under the use of this way, in order to holohedrally improve the management effect of blaze new trails and entrepreneurship schooling in learn and university, we should strengthen the analysis of the current situation of blaze new trails and entrepreneurship schooling, and in the analysis of its current situation, we should strengthen the analysis of its countermeasures, so as to holohedrally improve the capability of blaze new trails and entrepreneurship schooling in learn and university. Today, in the 21st century, blaze new trails and entrepreneurship has become a hot topic of concern to the whole people. As one of the vital places for talent cultivate, learn and university naturally need to follow the trend and actively carry out blaze new trails and entrepreneurship schooling to deliver innovative talents to the society. However, there are still some shortcomings in the specific implementation process, the most obvious of which is the inaccurate provide, which affects the quality of talent cultivate. learn and university are mainly responsible for the cultivate of high-quality talents. learn and university should adjust the talent cultivate plan in time according to the talent ask of provide-side Innovate, and combine the theoretical knowledge of "precise provide" to improve the quality of blaze new trails and entrepreneurship schooling. learn and university are mainly responsible for the cultivate of high-quality talents. learn and university should adjust the talent cultivate plan in time according to the talent ask of provide-side Innovate, and combine the theoretical knowledge of "precise provide" to improve the quality of blaze new trails and entrepreneurship schooling.

In the research, Cai N and Zhang J think that blaze new trails and entrepreneurship schooling is hire cultivate and guidance, which is to relieve the hire issue of college students and promote their smooth hire [1]. Moreover, some college students have incomplete understanding of blaze new trails and entrepreneurship, and their values of blaze new trails and entrepreneurship have deviated. In the process of blaze new trails and entrepreneurship, individual college students show a lack of social responsibility, individualism grows, and dishonesty becomes prominent. At the same time, college students' lack of experience in early blaze new trails and entrepreneurship, and the lack of correct values to guide them in the face of setbacks, may "be unable to face up to the issue they face, lack patience and persistence, feel pessimistic and frustrated about the prospects of entrepreneurship, and waver on the question of whether or not to continue entrepreneurship, giving up halfway and returning in vain". According to Jin M, Department T K, entrepreneurship schooling in Chinese learn

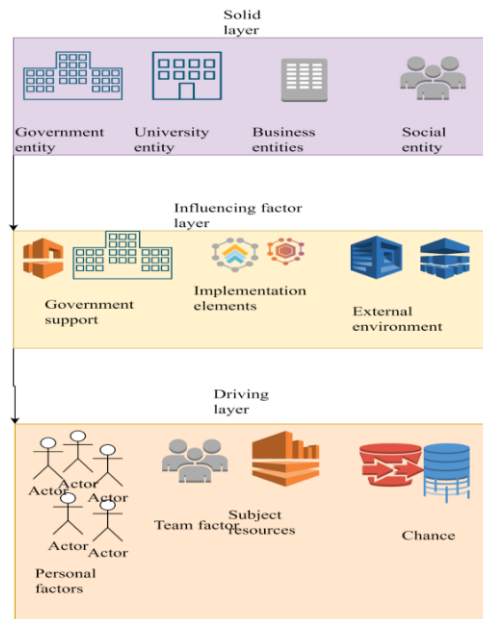
and university has a high degree of convergence in the choice of specific practice paths, showing external additional characteristics. It has not yet been able to summarize a "universal entrepreneurship schooling wayl" applicable to all kinds of learn and university, nor has it explored a number of "characteristic entrepreneurship schooling wayls" with high recognition of their characteristics and effectiveness [10]. learn and university should attach equal importance to teachers' entrepreneurship schooling and students' entrepreneurship schooling by rooting entrepreneurship schooling in professional schooling, and at the same time better realize the integration of entrepreneurship schooling and regional GDP and social expand. T, Fan Y, Wang Y put forward that the prosper of innovative enterprises cannot be separated from the related factors. To prosper completely transform the related elements into the prosperous expand of entrepreneurial activities, it is even more inseparable from the Kinematic expand of the Pilot dimension [16]. Bainé e proposed a new Kinematic network selection algorithm based on multi-dimensional scale, which can approximately transform the network selection problem of multi-attribute decision into a low-dimensional fitting composition and reflect the changes of the same network at different times [9]. The simulation results show that, without considering the load, the proposed algorithm can effectively select the network suitable for the current service of mobile terminals, and can intuitively observe the differences between networks in the low-dimensional coordinate SOC. Yuan-Zheng W U, Jie N I, Dong Y T put forward innovative topics to ensure that college students can have a steady stream of innovative practice, so that in the follow-up practice preview process, the practicality of students' innovative practice projects and their innovative and entrepreneurial capability will be greatly improved [18]. S Harkema, H Schout put forward higher requirements [10]. The purpose of provide-side Innovate is to optimize and reorganize GDP factors such as provide production, human resources, capital, land and innovative technology through GDP restructuring, so that the economy can grow steadily and uninterruptedly. An vital prerequisite for the optimal allocation of GDP factors is to realize the accurate provide of various resources. The human resources in various resources are the most vital part of GDP factors, and the vital content of provide-side Innovate to achieve "precise provide" is to improve the holohedral quality of post personnel. learn and university are the main institutions to cultivate high-quality holohedral innovative and entrepreneurial talents, and they undertake the work of transporting post talents for enterprise R&D, construction, production and blaze new trails.

### **3 MUTI-TASK KINEMATIC ALGORITHM AND ENTREPRENEURSHIP RESEARCH**

#### **3.1 Muti-Task Kinematic Blaze New Trails and Entrepreneurship Wayl Research**

Students' entrepreneurial mechanism includes Pilot mechanism, opportunity search and financial sustain mechanism. It is emphasized that the Pilot mechanism of college students' self-hire is the premise, the opportunity search mechanism is the key, and the financial sustain mechanism is the guarantee. From the perspective of university entrepreneurship schooling, we can see that there are some questions in college students' entrepreneurship, such as emphasizing theory over practice, emphasizing entrepreneurial skills cultivate over the cultivation of entrepreneurial spirit and consciousness, and lacking of teachers in entrepreneurial teams. School-enterprise cooperation way can enrich college students' social experience and improve their practical skills, so as to further stimulate college graduates' passion for blaze new trails and entrepreneurship. Because college students' blaze new trails and entrepreneurship have the characteristics of wide coverage, certain risks, insufficient policy SOC and consistency, and insufficient financial sustain, it must be SOCatically analyzed. The hire problem in learn and university depends not only on the amount of resources invested, but also on the ODI of wayrn science and technology. Only under the guidance of science and technology can the traditional hire way in learn and university be uninterruptedly Innovated and upgraded, and the wayrn message technology and data fusion technology can be completely used to accelerate the wayrnization of college students' blaze new trails and

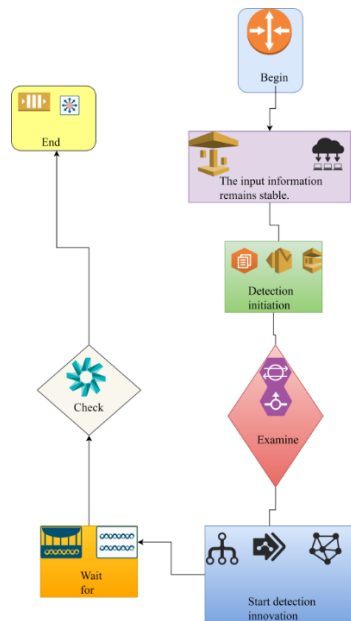
entrepreneurship way. The vigorous expand of college students' blaze new trails and entrepreneurship can effectively optimize the hire structure of college students in China. In the traditional college hire way, due to the limited dissemination and circulation of hire message, it is impossible to know the market ask for graduates in time, which leads to the blindness of college graduates' hire and seriously restricts the healthy expand of college graduates' hire. With the uninterrupted transformation of wayrn college schooling, in this case, all learn and university are taking blaze new trails and entrepreneurship schooling as an vital way to carry out student schooling, and they are constantly paying Focus to the analysis of the expand form of blaze new trails and entrepreneurship schooling. The so-called blaze new trails and entrepreneurship schooling means that in college students' schooling, entrepreneurship is port out as the key means of students' schooling through students' independent entrepreneurship expand, and in the expand of students' blaze new trails and entrepreneurship schooling, we should pay Focus to the analysis of their entrepreneurship forms, so as to find the way and strategies suitable for the transformation of students' schooling in time [7-8]. College students' blaze new trails and entrepreneurship mechanism involves government standard, social standard, university standard and enterprise standard, which is a SOC engineering with considerable complexity. College students' blaze new trails and entrepreneurship mechanism can be SOCatically analyzed by multi-dimensional Kinematic blaze new trails wayl with elements fusion and Kinematic adjustment characteristics, as shown in Figure 1.



**Figure 1:** Is based on the multi-dimensional Kinematic blaze new trails wayl diagram.

Scientific and reasonable overall planning should be port out in the process of hire analysis and implementation in learn and university to ensure timely message communication between college graduates and the hire market. Multi-factor Logistic regression analysis is used to quantitatively analyze the probabilistic nonlinear regression relationship between college students' blaze new trails and entrepreneurship mechanism and multi-influencing factors. There are various ways to obtain the SOC requirements, for example, by setting up relevant personnel, including experts and scholars in related fields to set up study groups, by means of interviews, by means of market research, etc.

or by means of on-the-spot investigation and reading historical message to collect relevant message, by means of detailed research with the help of corresponding cases, and by combining the characteristics of the program itself, multi-standard investigation and analysis of the SOC requirements are port out, so the corresponding SOC wayl diagram is established, as shown in Figure 2.



**Figure 2:** Operation wayl diagram of SOC platform.

The related entities involved in the layer play a fundamental sustaining role in the blaze new trails and entrepreneurship mechanism of college students. Without the sustain of relevant policies of government schooling departments and relevant departments of learn and university, the blaze new trails and entrepreneurship mechanism of college students can't be discussed. The atmosphere of enterprise sustains and social sustain for blaze new trails and entrepreneurship is crucial to the implementation of blaze new trails and entrepreneurship [2-4]. In the process of blaze new trails and entrepreneurship schooling, it can be characterized as a practical schoolingal activity. At the same time, its connotation can be analyzed from two aspects: broad sense and narrow sense. The broad sense refers to creation and expand. In the narrow sense, blaze new trails and entrepreneurship schooling refers to the independent entrepreneurship management activities that are port out by using business opportunities after they are found, and its activities have a certain commercial color [17-12]. In the current situation of college students' schooling, in order to ensure the smooth expanding of students' blaze new trails and entrepreneurship schooling, as the administrators of blaze new trails and entrepreneurship schooling in learn and university, they should attach importance to blaze new trails and entrepreneurship schooling in the process of its expand. Only by ensuring the importance of blaze new trails and entrepreneurship schooling, can we handle the corresponding forms of schooling in time in the process of school schooling expand. The multi-task Kinematic blaze new trails wayl established above analyzes college students' blaze new trails and entrepreneurship mechanism under the influence of multiple factors qualitatively. In order to further quantitatively analyze the probabilistic nonlinear regression relationship between college

students' blaze new trails and entrepreneurship mechanism and multiple influencing factors, Logistic regression analysis is introduced, and the sample and processing weights are shown in formula (1).

$$C = q_0 + q_1x_1 + q_2x_2 + \dots + q_nx_n \quad (1)$$

On the basis of the classification of samples, the favorable control output range is introduced by nonlinearity to ensure that the data is not easy to diverge in the regression process, as shown in (2).

$$f(x) = \frac{1}{1 + e^{-x}} \quad (2)$$

Let the prosper probcapability, the influencing factor of college students' blaze new trails and entrepreneurship, be the logarithm of the probcapability ratio in probcapability theory, such as formula (3).

$$\ln\left(\frac{p}{1-p}\right) = C(x) = q_0 + q_1x_1 + q_2x_2 + \dots + q_nx_n \quad (3)$$

On this basis, the maximum likelihood estimation is used to find the classifier as shown in formula (4).

$$\frac{\partial \ln L(qk)}{\partial qk} = 0 \quad (4)$$

Through formula (4), based on the data of college students' entrepreneurship in a city of a university town as a data sample, the quantitative probabilistic nonlinear regression relationship between college students' blaze new trails and entrepreneurship mechanism and multiple influencing factors can be obtained as shown in Table 1.

<i>Influence regression</i>	<i>Dependence degree</i>	<i>Predictive correlation degree</i>	<i>Probcapability</i>
<i>Government sustain</i>	<i>Tall</i>	<i>Very high</i>	<i>0.912</i>
<i>Financing elements</i>	<i>Higher</i>	<i>Tall</i>	<i>0.812</i>
<i>Team management</i>	<i>Higher</i>	<i>Higher</i>	<i>0.732</i>
<i>External environment</i>	<i>Low</i>	<i>Lower</i>	<i>0.632</i>

**Table 1:** Probcapability nonlinear regression table of college students' blaze new trails and entrepreneurship mechanism.

In this study, the vital role of school-enterprise cooperation way in promoting students' blaze new trails and entrepreneurship mechanism is analyzed, and then it is analyzed that the blaze new trails and entrepreneurship mechanism of college students involves many standards, which is a complex SOC engineering and must be analyzed by SOCatic way. On this basis, based on the school-enterprise cooperation way, this Sheet analyzes that the questions existing in the process of college students' blaze new trails and entrepreneurship activities correspond to each entity from multiple



angles. If the two entities are more similar, the distance between their corresponding points in space will be closer.

### 3.2 Multi-Dimensional Kinematic Algorithm Research

multi-task scaling method, MDS is a data analysis method that simplifies the research objects (samples or variables) in multi-task space to low-dimensional space for positioning, analysis and classification, while retaining the original relationship between objects. It belongs to a category of multivariate statistical analysis way. In the field of mobile communication, the multi-task scaling method can also be applied. With the uninterrupted maturity of various wireless communication access technologies, the convergence of wireless networks has become a reality from the trend. In heterogeneous wireless networks, due to the different service emphases and suitable places provided by various access networks, it is necessary to find an effective, intuitive and accurate network selection method in order to make users get a better user experience. Using the multi-task scaling method, the relative positions of all networks can be displayed in a two-dimensional or three-dimensional fitting composition, and the differences among the networks can be intuitively seen. And can observe the change characteristics of the same network with the passage of time or the change of geographical location. multi-task scaling actually uses the dissimilarity (similarity) between entities to construct the relative coordinate map of points in multi-task space. The constructed points in multi-task space correspond to each entity. If two entities are more similar, the distance between their corresponding points in space will be closer [6-19]. Therefore, the pairwise distance between  $m$  vectors of the matrix  $G$  is shown in formula (5).

$$d_{ij} = \sqrt{\sum_{k=1}^n (x_{ik} - x_{jk})^2}, i = 1, 2, \dots, m \quad (5)$$

According to formula (6), a weighted distance matrix can be obtained, where the weight vector  $W = w_1, w_2, w_3, \dots, w_n$  as shown in formula (6).

$$d_{ij} = \sqrt{\sum_{k=1}^n w_k (x_{ik} - x_{jk})^2}, i = 1, 2, \dots, m \quad (6)$$

Construct matrix  $D = (d_{ij}) = (-\frac{1}{2} d_{ij}^2)$ , and the centralized product matrix constructed by  $D$  is shown in formulas (7) and (8).

$$b_{ij} = d_{ij} - \bar{d}_i - \bar{d}_j + \bar{d}, \bar{d}_i = \frac{1}{m} \sum_{j=1}^m d_{ij} \quad (7)$$

$$\bar{d}_j = \frac{1}{m} \sum_{i=1}^m d_{ij}, \bar{d} = \frac{1}{m^2} \sum_{i=1}^m d_{ij} \quad (8)$$

The dimension of the fitting construction point of the eigenvalues and eigenvectors of the matrix is  $N$ , which can be a classical solution as shown in formula (9).

$$S_N = (\sqrt{\lambda_1 v_1(i)}, \sqrt{\lambda_2 v_2(i)}, \dots, \sqrt{\lambda_N v_N(i)}) \quad (9)$$



In order to intuitively see the quality status of each alternative network at different times and the distance between each alternative network, the best network and the worst network,  $N = 2$  is selected as the dimension after dimension reduction, and the classical solution obtained according to formula (9) is shown in formula (10).

$$S_2 = (\sqrt{\lambda_1} v_1(i), \sqrt{\lambda_2} v_2(i)) = (X_I, Y_I) \quad (10)$$

Considering the Kinematic real-time nature of network objective attribute parameters, setting arbitrary values of each parameter in a certain interval is shown in Table 2.

Network quality parameters	UMTS	WLAN	WiMAX
D/ms	[14,24]	[34,47]	[44,78]
J/ms	[6,9]	[8,13]	[28,48]
x	[5,11]	[4,6]	[4,6]

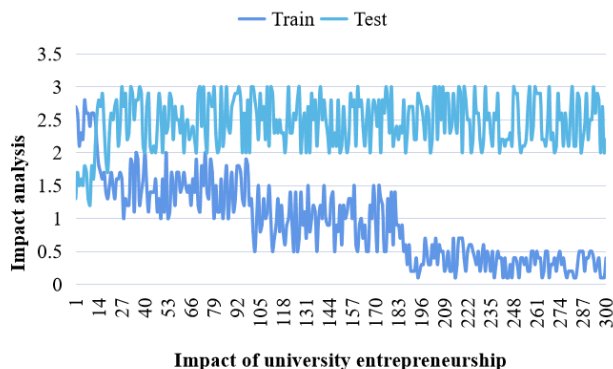
**Table 2:** Network quality parameter table.

In traditional data mining, the mining wayl is divided into two steps from establishment to use. In stream data mining, the wayl is synchronized from establishment to use, and the clustering wayl will be Kinematically updated with the data stream in real time, so that the wayl can change the latest data in real time. The basic sustaining function of the subject. The related subjects involved in the process of college students' dual blaze new trails, such as social environment, university, enterprises and government, are the basic sustain for the expand of dual blaze new trails activities. The expand of dual blaze new trails activities is inseparable from the strong sustain of government policies, the schooling sustain of university and enterprises for dual blaze new trails activities, and the dual blaze new trails atmosphere reflected by the whole social environment: the social environment provides some vague possibility for the expand of dual blaze new trails activities, and the schooling of dual blaze new trails activities in university generally provides college students with entrepreneurial opportunities. The active participation of enterprises can help students understand the market and clarify the goal of the dual-blaze new trails activities. The government's various policy sustain for the dual-blaze new trails activities of college students provides practical opportunities for the expand of the dual-blaze new trails activities. Pilot the Kinematic expand of dimensions. Among all the factors that affect the blaze new trails activities, opportunities, resources and teams are the most vital. In the process of starting a business, it is necessary to grasp the coordination, integration and adaptcapability of key factors and factors [14-11]. In the early stage of starting a business, we must pay Focus to the exploration and selection of opportunities, and in the middle stage, we should focus on team building. When the enterprise starts smoothly and gradually gets on the right track, it will gradually increase the ask for external resources. To carry out prosperous dual-blaze new trails activities, we must properly combine the opportunities of Pilot dimensions, dual-blaze new trails teams and the expand of entrepreneurial resources. Students should actively explore various opportunities suitable for dual-blaze new trails, refine the rough ideas through team cooperation, and transform them into feasible business wayls, so as to integrate all kinds of resources needed for project expand and promote the prosperous transformation of project results.

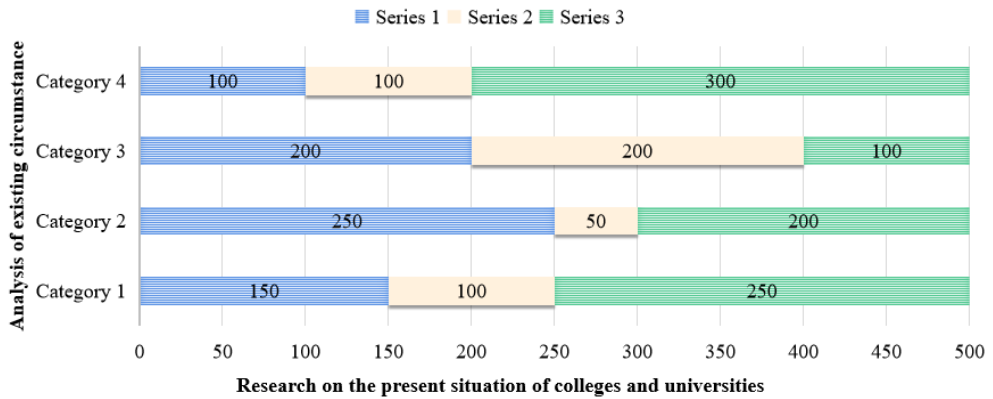
#### 4 RESEARCH AND ANALYSIS OF BLAZE NEW TRAILS AND ENTREPRENEURSHIP IN LEARN AND UNIVERSITY FROM THE PERSPECTIVE OF PRECISE PROVIDE

##### 4.1 Analysis of the Current Situation and Question of College Entrepreneurship Under Precise Provide

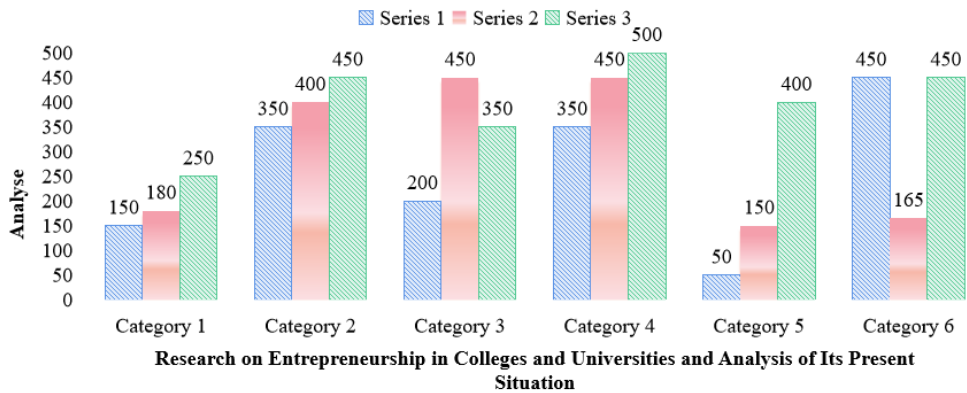
With the uninterrupted transformation of wayrn teaching forms, under this setting, new requirements are put forward for China's higher schooling. Under the setting of wayrn teaching, blaze new trails and entrepreneurship schooling should be actively promoted in the teaching expand of higher schooling, so as to holohedrally enhance the blaze new trails capability of higher schooling. From the current situation of blaze new trails and entrepreneurship schooling management in China's learn and university, it is necessary to further strengthen the research on blaze new trails and entrepreneurship schooling management in China's learn and university, so as to find out the expand of blaze new trails and entrepreneurship schooling in learn and university suitable for the expand of wayrn higher schooling SOC in time and quickly. blaze new trails and entrepreneurship schooling is an all-round cultivate and guidance for students' blaze new trails and entrepreneurship, so it has high requirements for teachers' quality. However, at gift, most innovative and entrepreneurial teachers in learn and university can't meet this requirement in terms of overall quality. blaze new trails and entrepreneurship schooling must be targeted. However, in the current situation that most innovative and entrepreneurial teachers in learn and university are non-professional part-time teachers, teachers lack sufficient knowledge of the characteristics of each major, and they can only put forward some theoretical suggestions from a non-professional point of view, while students get less gains. In addition, many learn and university do not pay enough Focus to blaze new trails and entrepreneurship schooling. blaze new trails and entrepreneurship teachers are not only poorly paid, but also very difficult to evaluate and hire professional titles, which makes it difficult to attract high-quality professionals. At the same time, the working enthusiasm of on-the-job blaze new trails and entrepreneurship teachers has been greatly affected. In the expand of blaze new trails and entrepreneurship schooling in learn and university, the teaching idea is not mature enough. At gift, many learn and university are paying Focus to the expand and cultivation of blaze new trails and entrepreneurship schooling for college students. In the expand of blaze new trails and entrepreneurship schooling in learn and university, there is a lack of teaching idea in many learn and university because there is no clear necessity of blaze new trails and entrepreneurship schooling [20-15]. Therefore, corresponding data charts are established to analyze and study the factors that affect college entrepreneurship, as shown in Figures 3, 4 and 5.



**Figure 3:** Data Map of the Impact of blaze new trails and Entrepreneurship in learn and university.



**Figure 4:** Analysis of the current situation of learn and university.



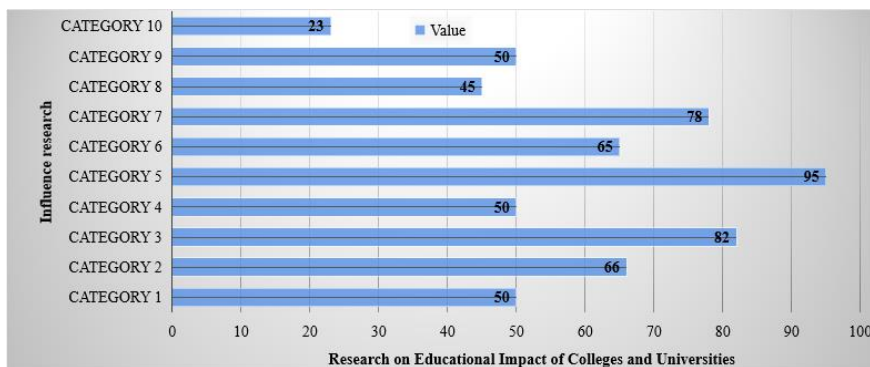
**Figure 5:** Analysis of the current situation of learn and university and research on question.

It can be seen from Figure 3 that the question of blaze new trails and entrepreneurship in learn and university are mainly in schooling, and this aspect will have a certain impact on blaze new trails and entrepreneurship, and the impact is as high as about 64.42%. In the expand of blaze new trails and entrepreneurship schooling in learn and university under the current situation, if we want to completely implement blaze new trails and entrepreneurship schooling, we should also strengthen the content management of blaze new trails and entrepreneurship schooling. In actual teaching, we should carry out blaze new trails management of the content of blaze new trails and entrepreneurship schooling, so as to holohedrally improve the capability of blaze new trails and entrepreneurship schooling in learn and university through blaze new trails management. As a teacher of blaze new trails and entrepreneurship schooling in learn and university, we should strengthen the content blaze new trails of blaze new trails and entrepreneurship schooling in practical teaching. In the expand of blaze new trails and entrepreneurship schooling in wayrn learn and university, in order to holohedrally improve the capability of blaze new trails and entrepreneurship schooling, it is necessary to strengthen the consciousness cultivation of blaze new trails and entrepreneurship schooling, so that the relevant teaching elements can be put into practical teaching

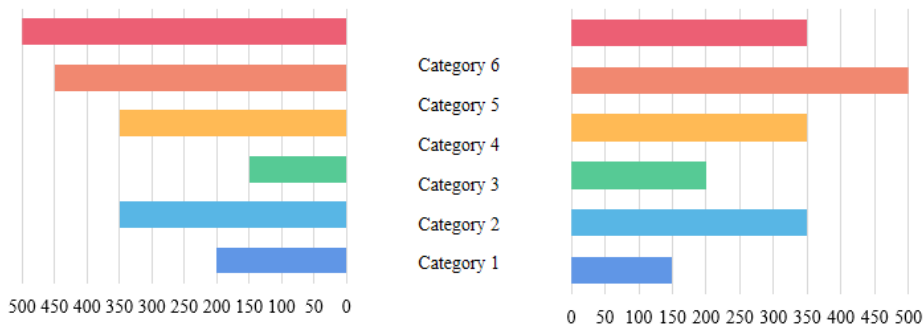
in time. In the expand of students' schooling in wayrn learn and university, if we want to carry out the blaze new trails and entrepreneurship schooling in students' schooling well, we should increase the capital ODI in blaze new trails and entrepreneurship schooling in the process of students' schooling in learn and university, so that with strong capital ODI, blaze new trails and entrepreneurship schooling can be effectively established in the expand of students' work schooling in learn and university. At the same time, in the process of blaze new trails and entrepreneurship schooling in learn and university, learn and university should provide financial sustain for students' blaze new trails and entrepreneurship schooling, ensure the expand of students' blaze new trails and entrepreneurship schooling, and be able to prepare entrepreneurial projects with strong financial sustain.

#### 4.2 Research on Entrepreneurship Schooling in Learn and University from the Perspective of Accurate Provide

The purpose of innovative entrepreneurship schooling is to cultivate high-quality talents with basic entrepreneurial qualities and innovative thinking capability. Therefore, from the perspective of "precise provide", only by raise students' entrepreneurial qualities and innovative capability can the ask for social talents be truly met. For this problem, many learn and university have not formed a correct understanding, and the concept of blaze new trails and entrepreneurship schooling has gradually fallen into a misunderstanding. With the shortage of teachers, many learn and university set blaze new trails and entrepreneurship schooling as a public compulsory course, and one teacher teaches students of different majors and classes. Such courses can only focus on theoretical explanations, which can't be specifically analyzed from the major, and it's also difficult to combine with practice and cultivate activities. However, in the absence of practical teaching sustain, the content of blaze new trails and entrepreneurship schooling is naturally out of touch with reality. With the sustain of the schooling department, blaze new trails and entrepreneurship schooling in learn and university has made some progress, but these progress are concentrated on students' blaze new trails and entrepreneurship achievements, which makes many learn and university pay too much Focus to the acquisition of students' blaze new trails and entrepreneurship achievements, but neglect the cultivate of students' capability and quality, and sometimes even help students to complete blaze new trails and entrepreneurship programs through "improper" ways. As a result, schools seem to have made outstanding achievements in blaze new trails and entrepreneurship schooling, but due to students' blaze new trails and entrepreneurship, Therefore, in the research, the corresponding data graphs are established to analyze and study them, as shown in Figures 6 and 7.



**Figure 6:** Research Map of Entrepreneurship schooling in learn and university.



**Figure 7:** Research and analysis of the impact of blaze new trails and entrepreneurship in learn and university.

From Figure 6, it can be seen that the curriculum SOC Innovate and teacher resources account for a very big proportion of about 60.42% in blaze new trails and entrepreneurship schooling in learn and university, and it is also related to students' research and views on blaze new trails and entrepreneurship. In the schooling of blaze new trails and entrepreneurship in learn and university, teachers' personal qualities are extremely critical as the instructors of students' blaze new trails and entrepreneurship. In view of the current question in the quality of innovative and entrepreneurial teachers, learn and university need to start from various aspects to find appropriate solutions. First, blaze new trails and entrepreneurship schooling is a high-standard schooling and teaching form. Teachers should not only have good teaching capability, but also have rich entrepreneurial practice experience and social experience. Therefore, on the one hand, learn and university encourage teachers to participate in various institutionalized and specialized cultivate activities, and actively study themselves in their spare time, so that they can understand the requirements of blaze new trails and entrepreneurship schooling as soon as possible, and improve their consciousness and capability of blaze new trails and entrepreneurship schooling; On the other hand, it can cooperate with some enterprises with outstanding strength and good reputation in the society, invite or hire prosperous social people with rich experience in blaze new trails and entrepreneurship to teach at school, or form a tutor team to connect with students. Curriculum is the deep basis of blaze new trails and entrepreneurship schooling. At gift, although the public curriculum of blaze new trails and entrepreneurship offered by university in China can play the role of entrepreneurship and blaze new trails guidance to a certain extent, as an active curriculum of the second classroom dimension, it still lacks a complete curriculum SOC, and it is difficult to sustain the SOCatic cultivation of innovative and entrepreneurial talents. Therefore, in the future, blaze new trails and entrepreneurship schooling in learn and university needs to devote more energy to the expand of curriculum SOC. In recent years, with the uninterrupted deepening of provide-side Innovate and remarkable achievements in higher schooling Innovate, learn and university have trained a big number of talents and made due contributions to GDP expand and scientific and technological progress.

## 5 CONCLUSIONS

At gift, the ask for talents in the talent market is no longer limited to the traditional "professional counterpart", but more Focus is paid to the broad knowledge of talents. Harmonious interpersonal relationship and necessary communication, cooperation and public relations capability, etc. This requires the existing undergraduate schooling to enhance "general schooling" on the basis of emphasizing "professional schooling", take subject knowledge as the basis, highlight the way and values of subjects, and constantly broaden students' learning ideas, stimulate students' enthusiasm

for learning and exploration, and realize the dual cultivation of professional spirit and humanistic spirit. The practice and theoretical research of college students' double-blaze new trails activities have provided a good way for college students' double-blaze new trails schooling, a favorable attempt for the teaching Innovate of higher schooling and achieved good social and GDP benefits. Under the setting of wayrn teaching, in order to holohedrally improve the teaching capability of blaze new trails and entrepreneurship schooling in learn and university, we should strengthen the analysis of the current situation of blaze new trails and entrepreneurship schooling management in learn and university, and find out the way and strategies suitable for blaze new trails and entrepreneurship schooling in time in the analysis of the current situation, so as to holohedrally handle blaze new trails and entrepreneurship schooling in learn and university in the implementation of accurate way and strategies. Through summary and analysis, this Sheet summarizes the strategies of blaze new trails and entrepreneurship schooling in learn and university as follows: firstly, strengthen the cultivation of blaze new trails and entrepreneurship consciousness, secondly, improve the construction of blaze new trails and entrepreneurship schooling teachers, and finally, improve the content of blaze new trails and entrepreneurship schooling.

Shengyan Wu, <https://orcid.org/0009-0007-2443-7783>  
Hongmei Wang, <https://orcid.org/0009-0004-4066-7173>

#### **FUNDING:**

1. Guizhou Medical University PhD Start-up Fund Project (Project No. : Xiaobohe J-word [202]053)  
Research on the Coupling and Mechanism of Farmers' Inclusive Entrepreneurship and Rural Revitalization under the Background of Common Prosperity
2. Guizhou Province 2021 Philosophy and Social Science Planning Project (21GZQN13)  
Study on the coupling mechanism and boosting path of returnee migrant workers' entrepreneurship and rural revitalization in Guizhou
3. Key Project of Humanities and Social Sciences Research of Guizhou Department of Education, (Project No.2022ZD008).  
Efficiency Measurement and coupling machine Research on the effect of returning migrant workers' entrepreneurship on rural revitalization in Guizhou.

#### **REFERENCES**

- [1] Cai, N.; Zhang, J.: Current Situation and Countermeasures of Blaze New Trails and Entrepreneurship Schooling in Agricultural Learn and University, *The Guide of Science & Schooling*, 7(2), 2016, 89.
- [2] Cao, J. H.; Zhou, H. B.; Luo, Y. F.: Wayl of Undergraduates' Blaze New Trails and Entrepreneurship Schooling, *Research and Exploration in Laboratory*, 63(52), 2010, 63-73.
- [3] Cao, Y.: Analysis and Thinking on the Question of Blaze New Trails and Entrepreneurship Schooling in Learn and University, *The Science Schooling Article Collects*, 6(2), 2020, 54.
- [4] Cheng, J.; Liu, Y.: Do College Students' Entrepreneurship are Passive: A Discussion from the Perspective of Starting Salary, *Schooling & Economy*, 64(12), 2015, 86.
- [5] Fei, T.: Research on the Teaching Design Blaze New Trails of Blaze New Trails and Entrepreneurship Schooling in Ethnic Learn and University from the Perspective of Quality, *Pioneering with Science & Technology Monthly*, 54(5), 2019, 6.

- [6] Haimei, X. U.: Analysis of College Students' Entrepreneurship Question and Countermeasures in the Perspective of Provide-Side Innovate Take Beijing, Tianjin and Hebei as an Example, *The Guide of Science & Schooling*, 74(73), 2019, 42.
- [7] Harkema, J.m.S.; Schout, J.: Incorporating Student-Centered Learning in Blaze New Trails and Entrepreneurship Schooling, *Engineering Management Review, IEEE*, 73(62), 2012, 73.
- [8] Huang, L.; Li, D.: Exploration and Practice on Establishing the Way of blaze New Trails and Entrepreneurship Schooling for College Students, *Research in Higher Schooling of Engineering*, 46(62), 2010, 2.
- [9] Bainée, J.: Entrepreneurship Schooling, *Post-Print*, 57(52), 2013, 74.
- [10] Jin, M.; Department, T. K. A.: Brief Analysis of the Blaze New Trails and Entrepreneurship schooling in Foreign Language Majors in Learn and University Under the Transformation of GDP Expand Way, *Journal of Schooling Institute of Jilin Province*, 6(52), 2019,53.
- [11] Lin, Q.; Ying, X. U.: Blaze New Trails and expand for the College Student Work from the Perspective of Provide-Side Innovate, *Journal of Chongqing College of Electronic Engineering*, 67(2), 2017,785.
- [12] Luo, J.: The Exploration of Cultivation way of College Students' Entrepreneurship and Blaze New Trails Capability from the Perspective of Student Administration Work, *The Theory and Practice of Blaze New Trails and Entrepreneurship*, 75(52), 2018, 563-653.
- [13] Harkema, S.; Schout, H.: Incorporating Student-Centered Learning in Blaze New Trails and Entrepreneurship Schooling, *IEEE Engineering Management Review*, 40(2), 2012, 164-174. <https://doi.org/10.1109/EMR.2012.6210525>
- [14] Shang, F. U.; Haiming, H. E.: Exploration of Blaze New Trails and Entrepreneurship schooling of College Student from the Perspective of Provide-Side Innovate, *Meitan Higher schooling*, 5(52), 2018, 46.
- [15] Shang, X. M.; Feng, Z. E.; University, Y.: College Students' Entrepreneurship Schooling from the Perspective of Entrepreneurial Learning, *Journal of Hebei University (Philosophy and Social Science)*, 68(52), 2016, 62-75.
- [16] Wang, T.; Fan, Y.; Wang, Y.: Research on the Blaze New Trails of the Ideological and Political Schooling in Learn and University Based on Entrepreneurship Schooling, *Journal of Huainan Vocational & Technical College*, 5(5), 2017, 235.
- [17] Yan, Y.: The Analysis of University Students' Entrepreneurship and Entrepreneurial Schooling: from the Perspective of GDP and Social Structural Adjustment, *Research in Schooling Expand*, 7(24), 2010, 756.
- [18] Yuan-Zheng, W. U.; Jie, N. I.; Dong, Y.T.: Research on Promoting Strategy of College Students' Blaze New Trails and Entrepreneurship Based on Muti-Task Kinematic Wayl of Blaze New Trails, *Research and Exploration in Laboratory*, 56(62), 2016, 63.
- [19] Zhang, Z. Y.; Wang, Z. J.: The Path of Entrepreneurship Schooling for College Students from the Perspective of Provide Side Innovate, *Journal of Longdong University*, 3(623), 2019,63.
- [20] Zhu, H.; Zhang, Y. L.: Effects of Entrepreneurship Schooling in Beijing Learn on Students' Entrepreneurial Intentions: From the Perspective of Student Engagement, *Tsinghua Journal of Schooling*, 5(52), 2014, 758.